

Industrial Panel PCs & Displays

DFI's Rugged Industrial Panel PCs and Displays Empower Your Productivity



DFI's Rugged Industrial Panel PCs Empower Your Productivity

DFI provides diverse panel PCs with advanced display technologies to ensure stable performance in industrial environments. Equipped with DFI's motherboard, this product family possesses high stability and reliability to fulfilling your various requirements in various industry fields.



Industrial Panel PCs & Displays Overview

Fanless Industrial Panel PC



KS156-AL

Intel Atom® Processor E3900	P7
15.6": KS156-AL	
7": KS070-AL	
Intel Atom® Processor E3800	P7-P8
15": KS150-BT	
10.1": KS101-BT	
7": KS070-BT	
Freescale™ i.MX6	P8
10": KS310-IMX6	
7": KS210-IMX6	
4th Gen Intel® Core™ Processor	P9
15": SPC150-HU	
Intel Atom® Processor E3800	P9
15": SPC150-BT	
10.1": VP101-BT	

Heavy-Duty Industrial Panel PC



TPC150-SD

7th/6th Gen Intel® Core™ Processor	P11
15": TPC150-SD	
3rd/2nd Gen Intel® Core™ Processor	P11
17": TPC170	
15": TPC150	
12.1": TPC121	

Bar Type Panel PC



BPC370-BW

Intel® Pentium®/Celeron® Processor N3000	P13
42": BPC420-BW	
37": BPC370-BW	



Adaptive Display Platform



KS215-KH

7th Gen Intel® Core™ Processor	P15
21.5": KS215-KH	
19": KS190-KH	
15": KS150-KH	
6th Gen Intel® Core™ Processor	P16
21.5": KS215-SD	
19": KS190-SD	
15": KS150-SD	
Intel Atom® Processor E3900	P17
21.5": KS215-AL	
19": KS190-AL	
15": KS150-AL	
7": KS070-AL	

Industrial Tablet PC



RPC101-BT

Intel Atom® Processor E3800	P18
10.1": RPC101-BT	
7": RPC070-BT	
Freescale™ i.MX6	P18
10.1": ART101	

Industrial Display



IDP150

Bar Type Display	P19
27.6": BD276	
28.6": BD286	
37": BD370	
42": BD420	
Industrial Touch Monitor	P19
15": IDP150	
17": IDP170	

Rugged Design

- Industrial-rated components with high MTBF over 100,000 hrs
- Extended operating temperatures
- High ESD protection for I/O ports
- Signal integrity measurement
- Wide range power design
- 100% Japanese-made solid capacitor
- Power hot plug protection for DC-in type SBC and Industrial Motherboards



Software Integration

- Embedded BIOS and OS customization services
- Windows licensing offerings
- Android, Linux distribution (Yocto/Ubuntu/CentOS/Debian)
- Embedded API
(Hardware Monitor, SMBus, I²C, Brightness Control, GPIO, Watchdog)
- Remote management utility

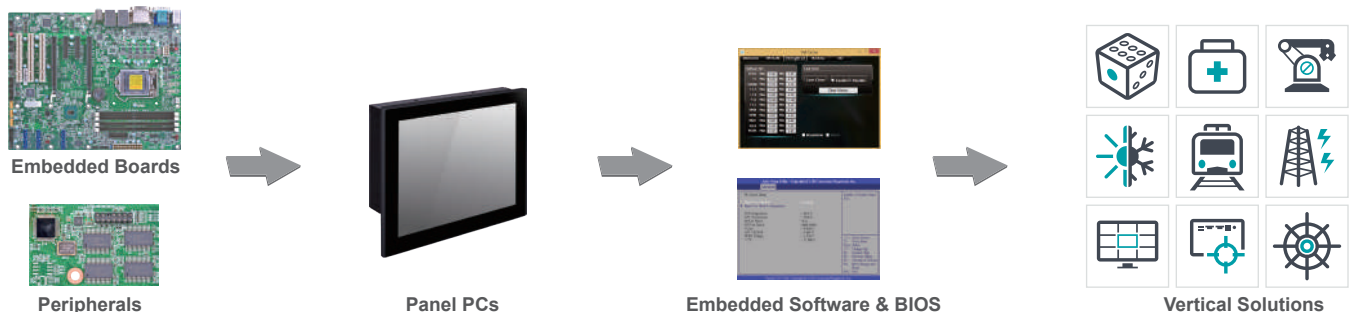


Embedded Total Solution

- Express customization service: 30 days (NRE cost: project based)
- Strict revision control
- Long product life cycle support
- High volume OEM/ODM production capabilities



DFI Provides a Total Solution Designed for Your Embedded Applications





Brand-New Bar Panel PCs

- 27.6" to 42" medium to big screen selections
- 178/178 degree wide viewing angel for both horizontal and vertical installation
- Available in Intel Atom® platforms
- Fanless, ruggedized, high brightness and low power consumption for 24/7 nonstop operation

x86



x86 & ARM Platform Support

- Supporting ARM platform (Freescale™ series), and x86 platform (Intel® Core™ and Intel Atom®) to fulfill different computing requirements
- Diverse operating system supports: Android, Windows, and Linux

ARM



Adaptive Display Platform

- Instantly building a solution by your demand: multiple-choice panel modules from 7" to 21.5", Intel® Core™ and Intel Atom® box modules
- Lower ownership cost and higher upgraded capability with rugged design



Heavy-Duty



Bar Type



Stainless Steel



Fanless



Mobile

Complete Panel Computing Solution

- Suited for diverse application scenarios: resistive & capacitive, high ingress protection, wide power input, and temperature resistance
- Product family includes: Fanless Panel PC, Heavy-Duty Panel PC, Bar Panel PC, and Industrial Tablet PC
- Sizes available from 7" to 42"

Fanless Industrial Panel PC

Compact Design & Effective Computing



Features

DFI offers fanless industrial Panel PCs in compact design to satisfy various space-limited applications. Supporting x86 and ARM platform and embedded with rich I/O ports, the series is able to meet your different computing requirements. Certified with IP65 rating and powered by effective computing processors, light industrial Panel PCs are suited for home automation, kiosk, interactive information system, and healthcare computing solution.

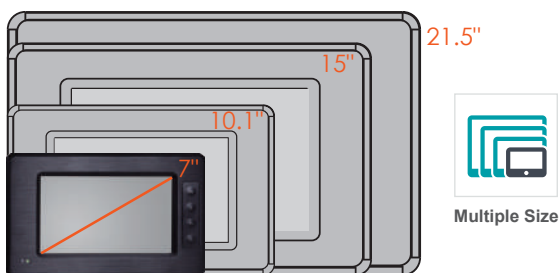
IP65 Front Water Proof



Fanless and Compact Design



Available in Several Sizes



Support Several Platforms and OS





Model Name		KS156-AL	KS150-BT	KS101-BT	KS070-BT	KS070-AL
Platform		Atom				
System	Processor	Intel Atom® E3900	Intel Atom® Processor E3800			Intel Atom® E3900
	Socket	BGA 1296	BGA 1170			BGA 1296
	Max. Speed	1.8~2.5GHz	1.33GHz~1.91GHz	1.91~2.42GHz		1.8~2.4GHz
	TDP	6W/6.5W/9.5W/12W	6W/10W	10W		6W/9.5W
	Cache	2M	1M/2M	2M		2M
	BIOS	Insyde SPI 64Mbit	AMI SPI 64Mbit			Insyde SPI 128Mbit
Memory	Technology	Dual Channel DDR3L 1867MHz	Single/Dual DDR3L 1066/1333MHz	Single Channel DDR3L 1333MHz		Single Channel DDR3L 1866MHz
	Max. Capacity	16GB	4GB/8GB	2GB/4GB		8GB
	Socket	2 SODIMM	1 or 2 SODIMM	Memory Down		1 SODIMM
Display & Touch Screen	Display Type	15.6" TFT Capacitive / 5-wire Resistive Touch	15" TFT Capacitive / 5-wire Resistive TFT	10.1" TFT LCD Panel with Capacitive Touch Screen	7" TFT LCD Panel with Capacitive Touch Screen	7" TFT Capacitive / Resistive Touch Screen
	Max. Resolution	1366x768	1024x768	1280x800	800x480	800x480
	Brightness	400 cd/m ²	250 cd/m ²	500 cd/m ²		500 cd/m ²
Graphics	Connector	1 VGA, 1 HDMI	1 DVI-I	1 HDMI		1 VGA, 1 DP++
Storage		1x 2.5" SATA 2.0 Drive Bay, 1 mSATA (Shared by Mini PCIe Socket)		1x 2.5" SATA 2.0 Drive Bay 1 micro SD (available upon request) 1 mSATA (Shared by Mini PCIe Socket)		1 CFast
Expansion	Mini PCIe, M.2, PCIe, SIM	1 PCIe x1, 1 Mini PCIe, 1 M.2, 1 SIM	1 Mini PCIe	3 Mini PCIe		1 Mini PCIe, 1 M.2
Audio	Audio Codec	Realtek ALC262		Realtek ALC886		Realtek ALC262
Ethernet	Controller	2 Intel® I211		2 Intel® I210		
LED	Indicators	Power, HDD LED	-	Power, HDD LED		-
I/O	Ethernet (GbE)	2	2	2	2	2
	Serial	2 RS-232/422/485	1 RS-232/422/485, 3 RS-232	4 RS-232/422/485, 1 RS-232	4 RS-232/422/485	2 RS-232/422/485
	USB	4 USB 3.0	1 USB 3.0, 2 USB 2.0	1 USB 3.0, 3 USB 2.0		2 USB 3.0, 2 USB 2.0
	Display	1 VGA, 1 HDMI	1 DVI-I	1 HDMI		1 VGA, 1 DP++
	Audio	Line-out	Line-out	Line-out, Mic-in		Line-out, Mic-in
	Buttons	Power Button	Power Switch	Power Button, Reset Button		Power Switch
Power		12V DC-in	12V DC-in	16~24V DC-in		12V DC-in
OS Support		Win10	Win7, Win8, Win10			Win10
Mechanism	Construction	Aluminum Front Bezel				
	IP Rating	IP65 Front Panel				
	Mounting	Panel/VESA Mount				
	Dimensions	403.4 x 253.7 x 57.6 mm (W x H x D)	373 x 297 x 46.10 mm (W x H x D)	294 x 193 x 48 mm (W x H x D)	208 x 156 x 48 mm (W x H x D)	TBD
	Weight	TBD	3.8 kg	1.7 kg	2 kg	1.5 kg
Environment	Operating Temp.	0°C~50°C (SSD)	-10°C~60°C (SSD)	0°C~60°C (SSD)	0°C~50°C (SSD)	TBD
	Relative Humidity	5%~85% RH (non-condensing)				



Model Name		KS310-IMX6	KS210-IMX6
Platform		ARM	
System	Processor	Freescale™ i.MX6	Freescale™ i.MX6
	Max. Speed	1.0GHz	1.0GHz
	Cache	512KB	512KB
Memory	Technology	Dual Channel DDR3 400MHz	Dual Channel DDR3 400MHz
	Max. Capacity	2GB	2GB
	Socket	Memory down	
Display & Touch Screen	Display Type	10.1" Projected Capacitive TFT	7" Projected Capacitive TFT
	Max. Resolution	1280x800	1024x600
	Brightness	300 cd/m ²	400 cd/m ²
Graphics	Connector	1 HDMI	1 HDMI
Storage		1 SD, 4GB eMMC Onboard	1 SD, 4GB eMMC Onboard
Expansion	PCIe, PCI	-	-
	Mini PCIe	1 Mini PCIe, 1 mSATA	1 Mini PCIe, 1 mSATA
	SIM	1 SIM	1 SIM
Audio	Audio	2 Built-in 1W Speaker	2 Built-in 1W Speaker
Ethernet	Controller	Atheros AR8033	Atheros AR8033
LED	Indicators	-	-
I/O	Ethernet (GbE)	1	1
	Serial	1 RS-232/422/485, 1 RS-232	
	USB	2 USB 2.0, 1 USB Client	2 USB 2.0, 1 USB Client
	Display	1 HDMI	1 HDMI
	Audio	1 Line-out/Mic-in	1 Line-out/Mic-in
	DIO	8-bit DIO	8-bit DIO
	Buttons	Power Switch	
	Wi-Fi Antenna	-	-
Power		12~36V DC-in	12~36V DC-in
OS Support		Android 4.3	Android 4.3
Mechanism	Construction	Aluminum Front Bezel, Rear Cover: Sheet Metal	Aluminum Front Bezel, Rugged Metal Housing
	IP Rating	IP65 Front Panel	
	Mounting	Wall / Panel Mount	Wall / Panel Mount
	Dimensions	293 x 204 x 43.4mm (W x H x D)	235 x 150 x 43.8mm (W x H x D)
	Weight	1.74 kg	1.26 kg
Environment	Operating Temp.	0°C~55°C	0°C~60°C
	Relative Humidity	85% RH at 65°C	85% RH at 65°C

Fanless In-vehicle & Stainless Steel Panel PC



Model Name		SPC150-HU	SPC150-BT	VP101-BT
Platform		ULT	Atom	Atom
System	Processor	4th Gen Intel® Core™ Processor	Intel® Celeron® Processor N2930	Intel Atom® Processor E3800
	Socket	BGA 1168	BGA 1170	BGA 1170
	Max. Speed	1.7GHz/2GHz	2.16GHz	1.33~1.91GHz
	TDP	15W	7.5W	10W
	Cache	3M	2M	2M
Memory	Technology	DDR3L 1333/1600MHz	DDR3L SDRAM 1333MHz	Single Channel DDR3L 1333MHz
	Max. Capacity	4GB	2GB/4GB	2GB/4GB
	Socket	Memory onboard	Memory onboard	ECC Memory onboard
Display & Touch Screen	Display Type	15" Projected Capacitive / 5-wire Resistive TFT	15" 5-wire Resistive TFT	10.1" TFT LCD Panel with Capacitive Touch Screen
	Max. Resolution	1024x768	1024x768	1280x800
	Brightness	400 cd/m ²	400 cd/m ²	500 cd/m ²
Graphics	Connector	-	-	HDMI, VGA
Storage		1x 2.5" SATA 3.0 Drive Bay, 1 SD	1x 2.5" SATA 3.0 Drive Bay, 1 SD	1x 2.5" SATA 2.0 Drive Bay 1 micro SD (available upon request) Onboard eMMC (available upon request)
Expansion	Mini PCIe	1 Mini PCIe	1 Mini PCIe	2 Mini PCIe, 1 mSATA
	SIM	-	-	1 SIM Socket
Audio	Audio Codec	Realtek ALC662	Realtek ALC662	Realtek ALC886
Ethernet	Controller	1 Intel® 82574	2 Intel® 82574	2 Intel® I210
LED	Indicators	-	-	Power, HDD LED
I/O	Ethernet (GbE)	1	2	2
	Serial	1 RS-232/422/485, 1 RS-232	1 RS-232/422/485, 2 RS-232	4 RS-232/422/485, 1 RS-232
	USB	1 USB 3.0, 2 USB 2.0	1 USB 3.0, 3 USB 2.0	1 USB 3.0, 3 USB 2.0
	Display	-	-	1 HDMI, 1 VGA
	Audio	-	Line-out	Line-out, Mic-in
	DIO	-	-	1 8-bit DIO
	Buttons	-	Power Switch, Remote Power Switch	Power Button, Reset Button
	Wi-Fi Antenna	-	-	5 x Antenna Hole
Power		9~36V DC-in	9~36V DC-in	9~36V DC-in In-Vehicle Power Management Includes Ignition On/Off and System On/Off Delay Time Control
OS Support		Win7, Win8, Win8.1	Win7, Win8.1	Win7, Win10, Ubuntu
Mechanism	Construction	Stainless Steel Chassis	Stainless Steel Chassis	Aluminum Front Bezel
	IP Rating	IP65/IP69K	5 Sides IP65	IP65 Front Panel
	Mounting	VESA Mount	VESA Mount	Panel/VESA Mount
	Dimensions	399 x 324 x 48.5 mm (W x H x D)	398 x 316 x 50.5mm (W x H x D)	294 x 193 x 48 mm (W x H x D)
	Weight	7.2 kg	6.5 kg	1.7 kg
Environment	Operating Temp.	-20°C~60°C (SSD), 0°C~50°C (HDD)	0°C~50°C	-20°C~60°C
	Relative Humidity	10%~90% at 40°C (non-condensing)	10%~90% at 40°C (non-condensing)	5 to 85% RH (non-condensing)

Heavy-Duty Industrial Panel PC

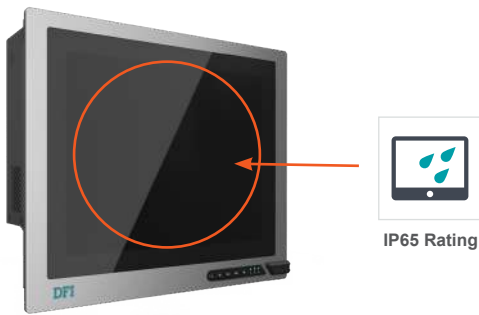
High Performance & Strong Scalability



Features

Powered by Intel® Core™ Desktop Processor, DFI's TPC series is designed for high computing requirements. The various I/O interfaces and expandability makes it easier to increase functional add-ons required in your application scenario. Certified with IP65 and wide voltage support, these heavy industrial Panel PCs are suited for demanding applications in factory automation and other harsh environments.

IP65 Front Water Proof



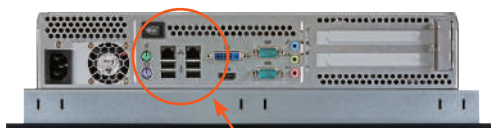
IP65 Rating

Resistive or Projected Capacitive Touch



Resistive Touch

Rich I/O : Connectivity



Rich I/O Connectivity

Expandability: 2 PCI/PCIe Slots



Multiple Expansion

Heavy-Duty Industrial Panel PC



Model Name		TPC150-SD	TPC170	TPC150	TPC121
Platform		Desktop		Desktop	
System	Processor	7th/6th Gen Intel® Core™		3rd/2nd Gen Intel® Core™ Processor	
	Socket	LGA 1151		LGA 1155	
	Max. Speed	2.4~4.2GHz		2.9~3.9GHz	
	TDP	35W/47W/65W		55W/65W/77W/95W	
	Cache	2M/3M/4M/6M/8M		3M/6M/8M	
	Chipset	Intel® H110/Intel® Q170		Intel® H61	
	BIOS	Insyde SPI 128Mbit		AMI SPI 32Mbit	
Memory	Technology	Dual Channel DDR4 1866/2133MHz		Dual Channel DDR3 1066/1333/1600MHz	
	Max. Capacity	32GB		16GB	
	Socket	2 SODIMM		2 SODIMM	
Display & Touch Screen	Display Type	15" PCAP/Resistive TFT	17" 5-wire Resistive TFT	15" 5-wire Resistive TFT	12.1" 5-wire Resistive TFT
	Max. Resolution	1024x768	1280x1024	1024x768	1024x768
	Brightness	300 cd/m ²	380 cd/m ²	250 cd/m ²	500 cd/m ²
Graphics	Connector	1 VGA, 1 DVI-I, 1 DP++		1 DVI-I, 1 HDMI	
Storage		1 or 2x 2.5" SATA 3.0 Drive Bay	2x 2.5" SATA 2.0 Drive Bay, 1 Optical Drive Bay (opt.)	2x 2.5" SATA 2.0 Drive Bay, 1 Optical Drive Bay (opt.)	1x 2.5" SATA 2.0 Drive Bay, 1 Optical Drive Bay (opt.)
Expansion	PCIe, PCI	2 PCI or 2 PCIe x8		1 PCIe x1 + 1 PCI or 2 PCI	
	Mini PCIe	1 Mini PCIe		2 Mini PCIe	
	SIM	-		-	
Audio	Audio Codec	ALC888		Realtek ALC886	
Ethernet	Controller	1 Intel® I210, 1 Intel® I219		1 Intel® W82579, 1 Intel® W82574	
LED	Indicators	Power, HDD, Alarm LED		Power, HDD, Alarm	
I/O	Ethernet (GbE)	2		2	
	Serial	1 RS-232/422/485, 1 RS-232		1 RS-232/422/485, 1 RS-232	
	USB	4 USB 3.0, 3 USB 2.0		6 USB 2.0	
	Display	1 VGA, 1 DVI-I, 1 DP++		1 DVI-I, 1 HDMI	
	Audio	2 Speaker		Mic-in, Line-in, Line-out	
	DIO	-		-	
	PS/2	1		2	
	Buttons	Power Switch, Remote Power Switch		Power Switch, 5 Function Keys	
	Wi-Fi Antenna	-		1	
Power		ATX Power / 24V DC-in	ATX Power	ATX Power	19~24V DC-in
OS Support		Win7, Win8.1, Win10, Linux		Win XP, WES 2009, POSReady 2009, Win7, WES7	
Mechanism	Construction	Sheet Metal		Aluminum Front Bezel, Rear Panel: Sheet Metal	
	IP Rating	IP65 Front Panel		IP65 Front Panel	
	Mounting	VESA / Panel Mount		VESA / Wall / Panel Mount	
	Dimensions	403 x 330 x 103.5 mm (W x H x D)	443 x 363 x 106 mm (W x H x D)	410 x 320 x 106 mm (W x H x D)	345 x 265 x 103 mm (W x H x D)
	Weight	TBD		9.6 kg	7.8 kg
Environment	Operating Temp.	0°C~50°C		0°C~50°C	
	Relative Humidity	5%~85% RH		90% RH at 50°C	

Bar Type Panel PC

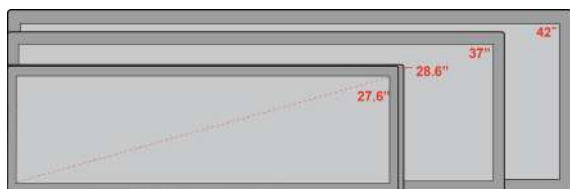
Fanless & Ruggedized Design



Features

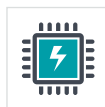
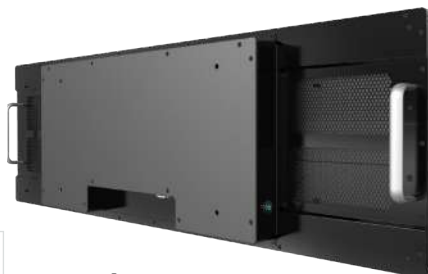
DFI's bar type panel pc series with a unique long-structure panel design is tailored to the applications in small and narrow spaces. Supporting low-power industrial-grade Intel Atom platforms, 24/7 nonstop reliable operation and high brightness, the series is able to fully meet your indoor and semi-outdoor requirements such as shop floor, public transit, stores, restaurants and so on.

Available in Multiple Sizes



Multiple Size

Platform : Intel Atom®



Intel Atom®

24/7 Stable Operation



24/7 Operation

High Brightness



High Brightness

Bar Type Panel PC



Model Name		BPC420-BW	BPC370-BW
Platform		Atom	Atom
System	Processor	Intel® Pentium®/Celeron® Processor N3000	Intel® Pentium®/Celeron® Processor N3000
	Socket	BGA 1170	BGA 1170
	Max. Speed	2.56GHz	2.56GHz
	TDP	6W	6W
	Cache	2M	2M
	Chipset	-	-
	BIOS	Insyde SPI 64Mbit	Insyde SPI 64Mbit
Memory	Technology	Single DDR3L 1600MHz	Single DDR3L 1600MHz
	Max. Capacity	8GB (4GB by default)	8GB (4GB by default)
	Socket	1 SODIMM	1 SODIMM
Display	Display Type	42" TFT LCD	37" TFT LCD
	Max. Resolution	1920x480	1920x540
	Brightness	700 cd/m ² (1500 cd/m ² available upon request)	700 cd/m ² (1000 cd/m ² available upon request)
Graphics	Connector	1 VGA, 1 DP++	1 VGA, 1 DP++
Storage		1 mSATA	1 mSATA
Expansion	Mini PCIe	1 Mini PCIe, 1 SIM (available upon request)	1 Mini PCIe, 1 SIM (available upon request)
Audio	Audio Codec	Realtek ALC888	Realtek ALC888
Ethernet	Controller	2 Intel® I211	2 Intel® I211
LED	Indicators	Power LED	Power LED
I/O	Ethernet (GbE)	2	2
	Serial	2 RS-232/RS422/RS485	2 RS-232/RS422/RS485
	USB	4 USB 3.0	4 USB 3.0
	Display	1 VGA, 1 DP++	1 VGA, 1 DP++
	Audio	Speaker 2W+2W (available upon request)	Speaker 2W+2W (available upon request)
	Buttons	Power	Power
Power		AC Input 110V ~ 240V	AC Input 110V ~ 240V
OS Support		Win7, Win8.1, Win10 IoT Enterprise, Ubuntu	Win7, Win8.1, Win10 IoT Enterprise, Ubuntu
Mechanism	Construction	Sheet Metal	Sheet Metal
	IP Rating	IP65 Front Protection Glass (available upon request)	IP65 Front Protection Glass (available upon request)
	Mounting	VESA Mount	VESA Mount
	Dimensions	1085.8 x 311.6 x 78.2 mm (W x H x D)	948.1 x 305.1 x 75.3mm (W x H x D)
	Weight	13 kg	11.15 kg
Environment	Operating Temp.	-5°C~50°C	-5°C~50°C
	Relative Humidity	5%~95% RH (non-condensing)	5%~95% RH (non-condensing)

Adaptive Display Platform

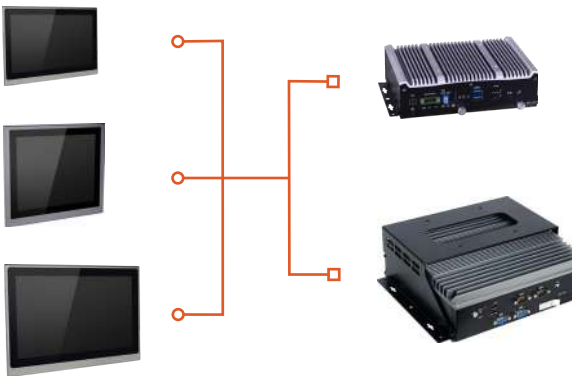
Modular Design & Easy Maintenance



Features

Adaptive Display Platform (ADP) is an advanced configure solution for Panel PC. It is a flexible modular system that provides customers with easy maintenance, installation, and configuration. The concept of this platform is modular design, which means letting users combine their ideal displays and box PCs themselves. The components are interconnected, but user can separate and detach the components for repair and development. It will be much cheaper to upgrade certain modules instead of the whole unit.

Configure by Demand



Rugged Design



Wide-voltage



Wide-temp



IP65 Rating



Anti-shock/vibration



Fanless

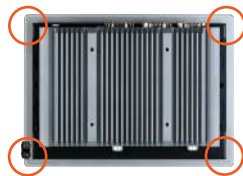


Cableless

Easy Installation & Maintenance



• Step 1



• Step 2

Upgrade Capability

- Brightness
- Resolution
- Panel Size
- Performance
- Function
- Connectivity



High-performance ADP Panel PC



Model Name		KS215-KH	KS190-KH	KS150-KH
Platform		ULT		
System	Processor	7th Gen Intel® Core™ Processor		
	Socket	BGA 1440		
	Max. Speed	2.1~4.2GHz		
	TDP	25W/35W/45W		
	Cache	3M/6M/8M		
	Chipset	Intel® CM238/QM175		
	BIOS	Insyde SPI 32Mbit		
Memory	Technology	Dual Channel DDR4 2400MHz		
	Max. Capacity	32GB		
	Socket	2 SODIMM		
Display & Touch Screen	Display Type	21.5" PCAP/Resistive TFT	19" PCAP/Resistive TFT	15" PCAP/Resistive TFT
	Max. Resolution	1920x1080	1280x1024	1024x768
	Brightness	250 cd/m²	350 cd/m²	300 cd/m²
Graphics	Connector	1 VGA, 1 DVI-I, 1 HDMI		
Storage		1x 2.5" SATA 2.0 Drive Bay	1x 2.5" SATA 2.0 Drive Bay	1x 2.5" SATA 2.0 Drive Bay
Expansion	Mini PCIe	2 Mini PCIe, 1 M.2		
	CFast	1 CFast Socket		
Audio	Audio Codec	Realtek ALC886		
Ethernet	Controller	1 Intel® I211, 1 Intel® I219		
LED	Indicators	Power, HDD, Alarm		
I/O	Ethernet (GbE)	2		
	Serial	4 RS-232/422/485		
	USB	4 USB 3.0, 2 USB 2.0		
	Display	1 VGA, 1 DVI-I, 1 HDMI		
	Audio	Line-out		
	DIO	-		
	PS/2	-		
	Buttons	Power, Reset		
	Wi-Fi Antenna	2		
Power		9~36V DC-in		
OS Support		Win10, Linux		
Mechanism	Construction	Aluminum + SGCC		
	IP Rating	IP65 Front Panel		
	Mounting	VESA / Wall / Panel Mount		
	Dimensions	544.2 x 360.6 x 118mm (W x H x D)	467 x 400 x 118mm (W x H x D)	387 x 320 x 118mm (W x H x D)
	Weight	TBD	TBD	TBD
Environment	Operating Temp.	0°C~45°C	-30°C~50°C	-20°C~50°C
	Relative Humidity	90% RH at 50°C		

High-performance ADP Panel PC



Model Name		KS215-SD	KS190-SD	KS150-SD
Platform		Desktop		
System	Processor	6th Gen Intel® Core™ Processor		
	Socket	LGA 1151		
	Max. Speed	2.4~3.4GHz		
	TDP	35W		
	Cache	4M/6M/8M		
	Chipset	Intel® Q170		
	BIOS	Insyde SPI 128Mbit		
Memory	Technology	Dual Channel DDR4 1866/2133MHz		
	Max. Capacity	32GB		
	Socket	2 SODIMM		
Display & Touch Screen	Display Type	21.5" PCAP/Resistive TFT	19" PCAP/Resistive TFT	15" PCAP/Resistive TFT
	Max. Resolution	1920x1080	1280x1024	1024x768
	Brightness	250 cd/m²	350 cd/m²	300 cd/m²
Graphics	Connector	1 VGA, 1 DVI, 1 HDMI		
Storage		1 x 2.5" SATA 3.0 Drive Bay		
Expansion	Mini PCIe	2 Mini PCIe		
	CFast	1 CFast Card Slot		
Audio	Audio Codec	Realtek ALC888		
Ethernet	Controller	1 Intel® I211, 1 Intel® I219		
LED	Indicators	Power, HDD, Alarm		
I/O	Ethernet (GbE)	2		
	Serial	4 RS-232/422/485		
	USB	4 USB 3.0		
	Display	1 DVI-I, 1 HDMI		
	Audio	Mic-in, Line-out		
	DIO	-		
	Buttons	Power, Reset		
	Wi-Fi Antenna	1		
Power		9~36V DC-in		
OS Support		Win7, Win10, Linux		
Mechanism	Construction	Aluminum + SGCC		
	IP Rating	IP65 Front Panel		
	Mounting	VESA / Panel Mount		
	Dimensions	544.2 x 360.6 x 118mm (W x H x D)	467 x 400 x 118mm (W x H x D)	387 x 320 x 118mm (W x H x D)
	Weight	TBD	TBD	TBD
Environment	Operating Temp.	0°C~45°C	-30°C~50°C	-20°C~50°C
	Relative Humidity	90% RH at 50°C		

Power-efficient ADP Panel PC



Model Name		KS215-AL	KS190-AL	KS150-AL	KS070-AL
Platform		Atom			
System	Processor	Intel Atom® E3900			
	Socket	BGA 1296			
	Max. Speed	1.8~2.4GHz			
	TDP	6W/9.5W			
	Cache	2M			
	BIOS	Insyde SPI 128Mbit			
Memory	Technology	Single Channel DDR3L 1866MHz			
	Max. Capacity	8GB			
	Socket	1 SODIMM			
Display & Touch Screen	Display Type	21.5"/19"/15" PCAP/5-wire Resistive TFT			7" PCAP/4-wire Resistive TFT
	Max. Resolution	1920x1080	1280x1024	1024x768	800x480
	Brightness	250 cd/m ²	350 cd/m ²	300 cd/m ²	500 cd/m ²
Graphics	Connector	1 x DP++, 1 x VGA or DVI-D (opt.)			
Storage		1 2.5" SATA 3.0 Drive Bay			
Expansion	Mini PCIe	2 Mini PCIe			
	SIM	1 SIM Slot			
Audio	Audio Codec	Realtek ALC262			
Ethernet	Controller	2 Intel® I210AT			
LED	Indicators	Power, HDD, Alarm LED			
I/O	Ethernet (GbE)	2 Support Jumbo Frame, IEEE1588v2, WOL, PXE 802.3 af PoE (PSE), Individual Port 15.4W (opt.)			
	Serial	2 RS-232/422/485 Support 5V/12V Power			
	USB	2 USB 3.0, 2 USB 2.0			
	Display	1 DP++, 1 VGA or DVI-D (opt.)			
	Audio	1 Line-out, 1 Mic-in			
	DIO	4 x DI/4 x DO (10-pin terminal block) (Opt.)			
	Buttons	Power Button			
	Wi-Fi Antenna	4 x Wi-Fi Module Antenna Hole			
Power		12V/9~48V DC-in (Ignition On/Off and System On/Off Delay Time Control)			
OS Support		Win10, Ubuntu			
Mechanism	Construction	Aluminum Front Bezel			
	IP Rating	IP65 Front Panel			
	Mounting	VESA / Panel Mount			
	Dimensions	544.2 x 360.6 x 80.9mm (W x H x D)	467 x 400 x 80.5mm (W x H x D)	387 x 320 x 80.5mm (W x H x D)	224 x 163.55 x 72.9mm (W x H x D)
	Weight	TBD	TBD	TBD	TBD
Environment	Operating Temp.	0 to 45°C	-30 to 55°C	-20 to 55°C	-20 to 55°C
	Relative Humidity	5%~90% RH			

Industrial Tablet PC

Rich Wireless Connectivity & Effective DAQ



Features

DFI industrial tablet equipped with 1D/2D barcode reader options and near field communication (NFC). It delivers efficient data acquisition and better management in production line. The built-in rich wireless communication, including 4G, 802.11 a/b/g/n and Bluetooth 4.0, ensures real-time data transmission in fields or indoors. It is a great helper in quality control, manufacturing shop floor, warehouse & DC.



Model Name		RPC101-BT	RPC070-BT	ART101
Platform		Atom		ARM
System	Processor	Intel Atom® Processor E3800	Intel® Celeron N2930 Processor	Freescale™ i.MX 6
	Max. Speed	1.75GHz	1.83GHz	1.0GHz
	Cache	2M		512KB
Memory	Technology	1 DDR3L		1 DDR3
	Max. Capacity	8GB		1GB
	Socket	Memory Down		
Display & Touch Screen	Display Type	10.1" Capacitive TFT	7" Capacitive TFT	10.1" Capacitive TFT
	Max. Resolution	1920X1080	1280x800	1280x800
	Brightness	1000 cd/m ²	850 cd/m ²	350 cd/m ²
	Sensor	Accelerometer, E-Compass, Gyroscope, Vibrator, Light Sensor		
Storage		256GB SSD Onboard, 1 microSD		8GB eMMC Onboard, 1 microSD
Communication		Wi-Fi, Bluetooth, NFC RFID, GPS, WWAN 4G (opt.)		Wi-Fi, Bluetooth, NFC RFID, GPS, WWAN 3G (opt.)
Camera		Rear: 5.0 Mega Pixels, Front: 2.0 Mega Pixels	Rear: 8.0 Mega Pixels, Front: 2.0 Mega Pixels	Rear: 5.0 Mega Pixels, Front: 2.0 Mega Pixels
Audio	Speaker	2 Speaker 0.8W		
LED	Indicators	Power and System Status, NFC RFID		
I/O		1 micro SIM, 1 micro HDMI, Earphone & Mic, 2 USB, 1 COM, 1 LAN, 1 Power, 1 Home, 1 Volume, 3 Programmable Button	1 micro SIM, Earphone & Mic, 2 USB 3.0, 1 COM, 1 Power, 1 Menu, 1 Windows, 4 Programmable Button	1 micro USB, 1 micro HDMI, Earphone & Mic, 1 Power, 2 Volume, 2 Scanner Trigger Button
Power / Battery		100~240V AC 50/60Hz 0.8A / Li-ion, 3.7V, 4500mAh	100~240V AC 50/60Hz 0.8A / Li-ion, 3.7V, 2900mAh	100~240V AC 50/60Hz 0.8A / Li-ion, 3.7V, 8060mAh
OS Support		Win7, Win10, Android 5.1 (opt.)	Win8, Win10	Android 4.2.2
Mechanism	IP Rating	IP65		IP65 / IP54
	Dimensions	280 x 195 x 230mm (W x H x D)	225 x 168 x 270 (W x H x D)	278 x 199 x 21 mm (W x H x D)
	Weight	1330 g	950 g	950 g
Environment	Operating Temp.	-20°C~50°C	-20°C~50°C	0°C~40°C
	Relative Humidity	5 to 95% RH	5 to 95% RH	5 to 95% RH

Industrial Display

Multiple Sizes & High Brightness



Bar Type Display



Model Name	BD276	BD286	BD370	BD420
Display Type	27.6" Bar Type Display	28.6" Bar Type Display	37" Bar Type Display	42" Bar Type Display
Max. Resolution	1920x360 (16:3)	1920x360 (16:3)	1920x540 (16:4.5)	1920x480 (16:4.5)
Brightness	1000 cd/m ²	700 cd/m ²	700 cd/m ²	700 cd/m ²
Contrast Ratio	1000:1	1000:1	4000:1	3500:1
Surface	Anti-Glare, 3H	Anti-Glare, 3H	Anti-Glare, 3H	Anti-Glare, 3H
View Angle	170/170°	178/178°	178/178°	178/178°
Input Interface	VGA, HDMI, USB	VGA, HDMI, USB	VGA, HDMI, USB	VGA, HDMI, USB
Backlight Life	50,000	50,000	50,000	50,000
Operating Temp.	-5°C~40°C	-5°C~50°C	-5°C~50°C	0°C~50°C
Dimensions	730.7 x 172.3 x 64.3mm (W x H x D)	737.1 x 235.1 x 64.3mm (W x H x D)	928.9 x 282.7 x 64.3mm (W x H x D)	1135 x 315 x 63mm (W x H x D)

Touch Monitor

15"



17"



Model Name	IDP150	IDP170
Display Type	15" Capacitive LCD	17" Capacitive LCD
Max. Resolution	1024x768	1280x1024
Brightness	350 cd/m ²	250 cd/m ²
Contrast Ratio	700:1	1000:1
View Angle	85°/85°/80°/80° (L/R/U/D)	85°/85°/80°/80° (L/R/U/D)
Input Interface	USB, VGA	USB, DVI-I, VGA
Backlight Life	30,000	30,000
Power	100V~240V, 50Hz/60 Hz, 12V/3A	100V~240V, 50Hz/60 Hz, 12V/3A
Operating Temp.	0°C~40°C	0°C~40°C
Dimensions	340.37 x 267.86 x 44.3 mm (W x H x D)	392.63 x 327.95 x 46.82 mm (W x H x D)



Headquarters

DFI Inc.

10F, No.97, Sec.1, Xintai 5th Rd.
Xizhi Dist., New Taipei City 22175
Taiwan (R.O.C.)
Tel: +886 (2) 2697-2986
Fax: +886 (2) 2697-2168
www.dfi.com
estore.dfi.com

DFI-ITOX, LLC

15 Corporate Place South, Suite 201
Piscataway, NJ 08854, U.S.A.
Tel: +1 (732) 390-2815
Fax: +1 (732) 562-0693
www.dfi-itox.com
www.dfi-itox.com/estore

Diamond Flower Information (NL) B.V.

Klompemakerstraat 89, 3194 DD
Rotterdam Hoogvliet, The Netherlands
Tel: +31 (10) 313-4100
Fax: +31 (10) 313-4101
www.dfi.com

DFI Co., Ltd.

5F Dai2 Denpa Bldg. 2-14-10 Sotokanda
Chiyoda-ku, Tokyo, 101-0021, Japan
Tel: +81 (3) 5209-1081
Fax: +81 (3) 5209-1082
www.dfi.com

Yan Ying Hao Trading Co., Ltd. (Shenzhen)

303, No. 29, Xincun, Yanglong, Gaofeng
Community, Dalang Sub-District, Longhua
District, Shenzhen City, China
Tel: +86 (0755) 2372-9390/2372-9391
Fax: +86 (0755) 2372-4065
www.dfi.com

Value-Added Services



eStore

Easy / Fast / Convenient

Provides you around-the-clock services worldwide



Online Technical Service

Real-Time / Professional / 24/7

Resolves your technical questions on the spot

